

Art Student Oil Colours

W


D

D

T

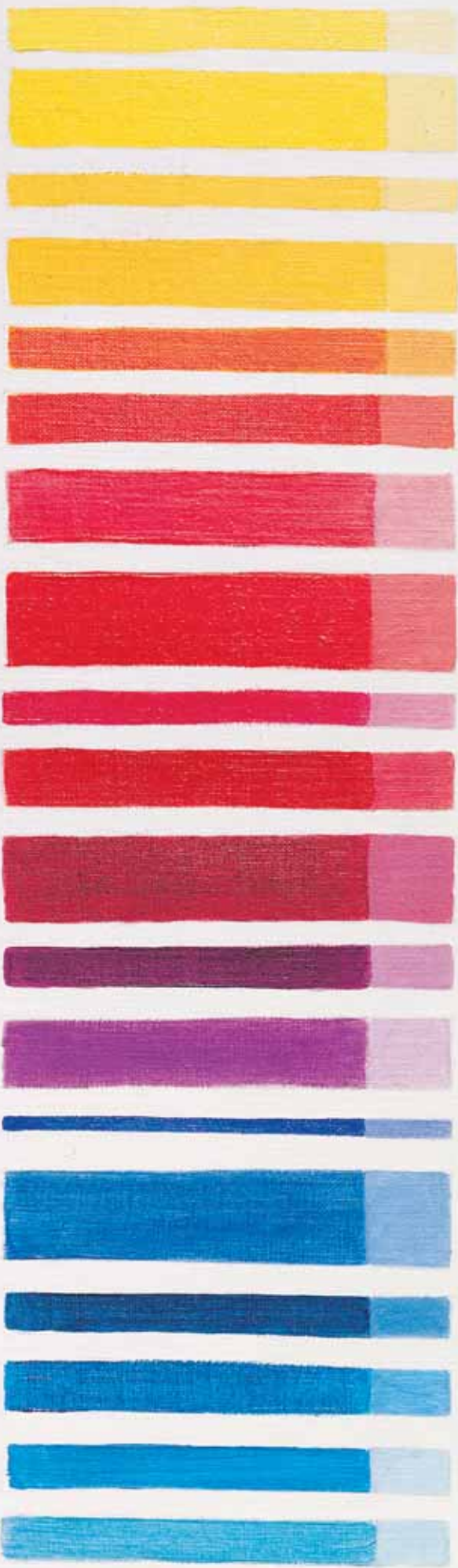
W

SENNELIER

The image features two paintbrushes. The one on the left is positioned vertically against a dark red background, with its bristles coated in a thick layer of red paint. The one on the right is also vertical, set against an orange background, with its bristles coated in red paint. A white rectangular text box is centered between the two brushes.

Sennelier Etude Art Student Oil Colours are traditionally crafted with the same attention to quality that has made Sennelier Artist Oil Colours the premier name in fine art oils.

The vibrant and intense colours of this range feature excellent stability in colour mixing and lightfastness. The buttery texture allows smooth brushwork in thick applications or glazing. A comprehensive 36 colour range features a traditional palette of established colours, perfect for artists of any ability. Three accurate primaries are optimized for colour mixing, enabling the artist to create a vast palette of colours. Etude's very affordable price allows students and beginners to experience the renowned Sennelier quality that has made it the standard for over a century. For professional artists, the large 200ml. tubes are the perfect combination of price and quality, especially when working in large format or thick application.



501 Lemon Yellow
PY4 PY3 PW6 *Transp. / Op. ★★★ n.r.*

539 Cad. Yellow Light Hue (Primary)
PY1 PW6 *Trans. / Op. ★★★ I*

543 Cadmium Yellow Deep Hue
PY3 PY1:1 PW6 *Trans. / Op. ★★★ n.r.*

547 Cadmium Yellow Orange Hue
PY1:1 *Transp. / Op. ★★★ n.r.*

615 Cadmium Red Orange Hue
PY13 PR4 *Transp. / Op. ★★ n.r.*

613 Cadmium Red Light Hue
PR4 PR3 *Opaque ★★★ n.r.*

681 Bright Red
PR254 *Opaque ★★★ n.r.*

674 Vermilion
PR3 PW6 *Opaque ★★★ n.r.*

606 Cad. Red Deep Hue (Primaire)
PV19 *Opaque ★★★ I*

689 Alizarin Crimson
PR83 PY13 *Transp. / Op. ★★ n.r.*

635 Carmine
PR83 PV23 *Transp. / Op. ★★ III*

913 Cobalt Violet Deep Hue
PB29 PR48:2 *Transp. / Op. ★★ n.r.*

911 Cobalt Violet Light Hue
PV16 PW6 *Transp. / Op. ★★★ I*

357 Ultramarine Blue
PB29 *Transp. / Op. ★★★ I*

303 Cobalt Blue Hue
PB29 PB15:3 PW4 *Op. ★★★ I*

360 Phthalo Blue
PB15:3 PBk9 PV23 *Transp. / Op. ★★★ I*

323 Ceruleum Blue Hue (Primaire)
PB15:4 *Transp. / Op. ★★★ I*

320 Azure Blue
PB15:3 PW6 *Transp. / Op. ★★★ I*

341 Turquoise
PB15:3 PG7 PW4 PW6 *Op. ★★★ I*



807 Phthalo Green Deep
PG7 PB15:3 PY1:1 *Transp. / Op. ★★★ n.r.*

869 Viridian
PG7 *Transp. / Opaque ★★★ I*

847 Emerald Green
PG7 PY1 PW6 *Opaque ★★★ n.r.*

873 Phthalo Green Deep
PG7 PY1:1 *Transp. / Op. ★★★ n.r.*

871 Bright Yellow Green
PG36 PY1 PW6 *Opaque ★★★ n.r.*

805 Phthalo Green Light
PG7 PY1 PBk9 PW6 *Op. ★★★ n.r.*

213 Green Earth
PG23 PY42 PG7 PBk11 *Op. ★★★ I*

205 Raw Umber
PR101 PY42 PBk11 *Op. ★★★ I*

567 Naples Yellow
PY1 PY42 PW6 *Opaque ★★★ n.r.*

252 Yellow Ochre
PY42 PR101 PW6 PBk11 *Op. ★★★ I*

208 Raw Sienna
PR101 PY42 PBk11 *Op. ★★★ I*

250 Flesh Ochre
PR101 PY42 PW6 *Op. ★★★ I*

259 Red Ochre
PR101 PY42 PBk11 *Op. ★★★ I*

211 Burnt Sienna
PR101 PY42 PBk11 *Op. ★★★ I*

202 Burnt Umber
PR101 PY42 PBk11 *Op. ★★★ I*

755 Ivory Black
PBk9 *Opaque ★★★ I*

116 Titanium White
PW6 PW4 *Opaque ★★★ I*

*** Lightfast ** Good lightfastness * Moderate lightfastness 0 Fugitive

I, II, III ASTM D4302 (n.r.: not rated)



Etude 36 colour range available in 34ml and 200ml tubes

Available at:

SENNELIER

modern since 1887

E-mail: max.sauer@wanadoo.fr
Internet: www.max-sauer.com